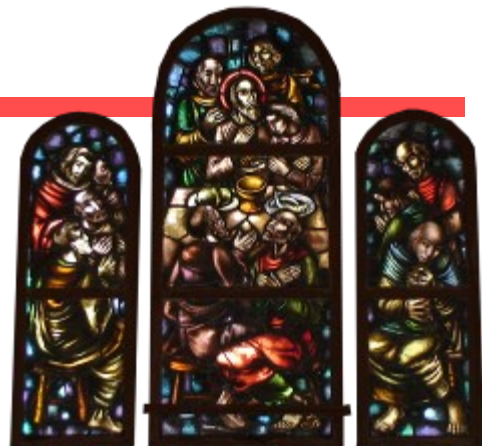


# The Journey

St. Mary of Mo'ili'ili

An Online Monthly Pictorial News Record

August 2017



## Centennial Anniversary: Soldier Chapel

### Let us this day

- \* Praise the Lord
- \* Share a meal with a neighbor
- \* Pray that our President do the right thing
- \* Pledge to take care of your body
- \* Plan to attend a Bible Study
- \* Volunteer to help with the homeless ministry—last Thursday of each month

### Inside this issue:

Chapel Celebration	1
100 years continue	2
Feeding Homeless	3
Give Aloha	4
Bernice Tawarahara	5
Senior Nutrition	5
Bible Study	5
Upcoming Activities	6

## July 15, 1917

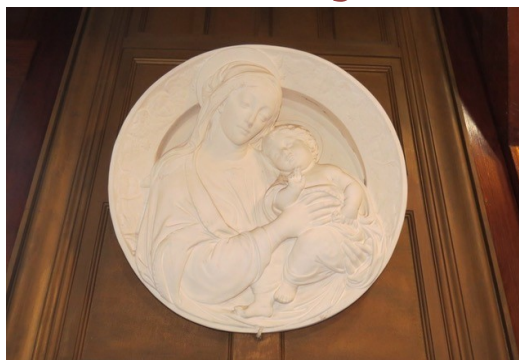
100 years old is a century old!

100 hundred years is how old St. Mary's Soldier Chapel is.

This church building serving the community of Mo'ili'ili faithfully, received within its hollowed walls this past July 15th, a special delegation - those who know and marveled at its history came to celebrate it's beginning and life.

Present were members and friends attending a choral celebration of the centennial anniversary.

The Hawaii Sacred Choir under the direction of choir master, Fr. Dan Werning blessed all present with music and song. The celebration was officiated by the



St. Mary Plaque in Soldier Chapel



Brig. General Edward Davis



Harrison Spiegelberg

## July 15, 2017

Rev. Prof. Gregory Johnson. The guest speaker was Harrison Spiegelberg who is the Great-Grandson of Brig. General Edward Davis. His message was a tribute to General Davis.

Soldier Chapel was completed 100 years ago because General Davis provided \$27,000 for its construction.

Prior to its completion, St Mary's church body (which was founded in 1911) met in a mission house that served as a school and later an orphanage.

The new chapel finished in July 1917 for St. Mary's attendees was a place of worship for predominantly Chinese and Japanese immigrants in the Mo'ili'ili area.

cont, pg 2

# 100 years continue from page one

Photos pages 1 and 2 by Janice Motoshige



Mo'ili'ili was truly blessed because of General Davis' sacrificial giving.

General Edward Davis was the commanding officer of the US Army's Camp McKinley in Kapiolani Park, 1901-1903. Afterward he spent his retirement in Hawaii.



Photo of Gen Davis and Sen Inouye

The seating capacity of the Chapel is 80 people, but the number of souls that have been blessed within the chapel that General Davis had built, for the glory of God, is too numerous to count.



Great-grandson Harrison Spiegelberg

At the 100 year anniversary of Soldier Chapel (St. Mary's main sanctuary until 1988), we honor with great thanks, Brig. General Edward Davis



Hawaii Sacred Choir:

Kari Magaruh—Soprano, Sara Ricer — Alto,  
Guy Merola—Tenor and David Webb—Bass



Sacred Choir Singers with Speaker and his wife



Rick Broadwell on trumpet



Choir Master: Fr. Dan Werning



# IHS and St. Mary's



## Feeding the Homeless



It's joy to help those in need!



with Clothing, Books, Food to leave with, Fellowship and a Hot Sit Down Meal



The Last Thursday of Every Month



St. Mary of Mo'ili'ili  
Code #78883

**St. Mary's Episcopal Church** is participating for the second year in the *Give Aloha, Foodland's Annual Community Matching Gifts Program*. This program honors Foodland's founder, Maurice J. "Sully" Sullivan, and continues his legacy of giving back to the community

### How It Works

From September 1-30 make donations to St. Mary's at any Foodland, Sack N Save and Foodland Farms location statewide. Foodland and the Western Union Foundation will match a portion of each donation made with a Maika'i card. Please ask family and friends to make a donation to St. Mary's.

### How to Donate

- At checkout, present your Maika'i card (or give your 10-digit number) and inform the cashier that you would like to make a donation to **St. Mary's, code #78883**. If you do not have a Maika'i account, you can establish one by asking the cashier.
- Tell the cashier how much you would like to donate and it will be added to your grocery purchase total.
- You may donate up to a cumulative of \$249 over the course of several store visits (any amount over \$249 will not be matched).
- Be sure the cashier reaffirms our organization's name and amount that you are donating. Donations must be made payable to Foodland or Sack N Save.
- The name of our organization and amount will appear on your receipt.

### Donations are Tax Deductible

Please save your store receipt for tax purposes. You may ask the cashier for a duplicate receipt. Donors names will not be released to St. Mary's. Submit your Give Aloha receipt with your name to St. Mary's parish administrator and your donation will be acknowledged.

### How Your Donations Help

Funds from this program will support the outreach ministries St. Mary's provides to the community of Mo'ili'ili.



## SENIOR FARMERS' MARKET NUTRITION PROGRAM

The Hawaii Foodbank will be distributing a limited number of Senior Farmers' Market Nutrition Program voucher booklets at partner locations around the island. The goal is to provide fresh and locally-grown fruits and vegetables for our seniors.

Vouchers are redeemable with certified vendors at various farmers' markets from June 21 to September 30, 2017.

Applicants must be certified to participate each year.

Applications and vouchers available at St. Mary's on August 18th and September 8th in the Gathering Room from 8am to 12noon.



Photo by Janice Motoshige



Photo by:  
Kimery Ushijima



Bernice Tawarahara's 90th Birthday



Wednesday  
Bible Study

# Road Map



An Online Monthly Pictorial News Record

2062 South King Street  
Honolulu, HI 96826

Email: [stmaryshawaii@gmail.com](mailto:stmaryshawaii@gmail.com)  
Phone: 808-949-4655

Web: <http://www.stmaryshawaii.org>

The Journey  
BACK ISSUES  
Click Here



## Mo'ili'ili Homeless Outreach Service

August 31 - 10am  
In Gathering Room  
Volunteers report at 9am



## Sunday Worship Service 9:00am

### Aloha Hour Bible Study

10:00am Sundays in  
Gathering Room

Wednesdays 10:00 AM  
Gathering Room

### Vestry Meeting

Sunday, August 20th  
10:15am Conference  
Room

### Holy Land Class

Saturdays 10:00am  
August 5, 12 & 19  
Conference Room

## Office Closed

Friday  
August 18th

Tri Church:

LUCY QUILTING CIRCLE  
Tuesdays 9:30am - 2pm  
St. Luke's Episcopal Church

## In Memorial

10-Ann Graven  
14-Ethel Kumura  
15-Bill Sumida  
16-Charles Tawarahara  
31-Mildred Ushijima

## Anniversaries

7 - David & Martha Blanchett  
28 - Roy & Jan Horimoto

## July Birthdays

8 - James Maruyama 9 - Brandon Padama-Kinere  
9 - Larke Golaski 30 - Arlene Sato

The Journey Editor: Fr. David Blanchett

## Free Health Classes

### YOGA CLASS

Tuesdays 10:00am  
Gathering Room

### ZUMBA CLASS

Saturdays 8:30am  
Gathering Room

### TAI CHI CLASS

Sundays 8:00am  
Front Lawn

Senior Farmer's Market  
Nutrition Program  
Friday- August 18, 2017  
8am - 12pm  
Gathering Room